



India Meteorological Department
Earth System Science Organisation
(Ministry of Earth Sciences)

BULLETIN NO.: 04 (BAY OF BENGAL 01/2020)

TIME OF ISSUE: 1645 HOURS IST

DATED: 16.05.2020

FROM: INDIA METEOROLOGICAL DEPARTMENT (FAX NO. 24643965/24699216/24623220)

TO: CONTROL ROOM, NDM, MINISTRY OF HOME AFFAIRS (FAX.NO. 23093750)

CONTROL ROOM NDMA (FAX.NO. 26701729)

CABINET SECRETARIAT (FAX.NO.23012284, 23018638)

PS TO HON'BLE MINISTER FOR S & T AND EARTH SCIENCES (FAX NO.23316745)

SECRETARY, MOES, (FAX NO. 24629777)

H.Q. (INTEGRATED DEFENCE STAFF AND CDS) (FAX NO. 23005137/23005147)

DIRECTOR GENERAL, DOORDARSHAN (23385843)

DIRECTOR GENERAL, AIR (23421105, 23421219)

PIB MOES (FAX NO. 23389042)

UNI (FAX NO. 23355841)

D.G. NATIONAL DISASTER RESPONSE FORCE (NDRF) (FAX NO. 26105912, 2436 3260)

DIRECTOR, PUNCTUALITY, INDIAN RAILWAYS (FAX NO. 23388503)

CHIEF SECRETARY, ANDAMAN & NICOBAR ISLANDS (FAX NO. 03192- 232656)

CHIEF SECRETARY, WEST BENGAL (FAX NO. 033-22144328)

CHIEF SECRETARY, GOVT. OF ODISHA (FAX NO. 0674 -2536660)

CHIEF SECRETARY, ANDHRA PRADESH (FAX NO. 0863-2441029, 08645-246600)

CHIEF SECRETARY, TAMIL NADU (FAX NO. 044-25672304)

CHIEF SECRETARY, PUDUCHERRY (FAX NO. 0413-2337575, 2334145)

Sub: Depression over southeast Bay of Bengal intensified into a Deep Depression over the same region. Likely to intensify into a Cyclonic Storm: Pre-cyclone Watch for West Bengal and North Odisha coasts (Yellow Message).

The **depression** over Southeast Bay of Bengal and neighbourhood moved northwestwards with a speed of 5 kmph during past 06 hours, intensified into a Deep Depression and lay centred over the same region at 1430 hrs IST of today, the 16th May, 2020 near latitude 10.9°N and longitude 86.3°E, about 1040 km south of Paradip (Odisha), 1200 km south-southwest of Digha (West Bengal) and 1300 km south-southwest of Khepupara (Bangladesh). It is very likely to intensify into a Cyclonic Storm during next 12 hours and further into a Severe Cyclonic Storm during subsequent 24 hours and rapidly intensify into a Very Severe Cyclonic Storm by 18th morning. It is very likely to move north-northwestwards initially till 17th May and then re-curve north-northeastwards across northwest Bay of Bengal towards West Bengal and adjoining Odisha coasts during 18th to 20th May 2020.

Forecast track and intensity are given in the following table:

Date/Time(IST)	Position (Lat. °N/ long. °E)	Maximum sustained surface wind speed (Kmph)	Category of cyclonic disturbance
16.05.20/1430	10.9/86.3	50-60 gusting to 70	Deep Depression
16.05.20/1730	11.2/86.2	55-65 gusting to 75	Deep Depression
16.05.20/2330	11.8/86.1	60-70 gusting to 80	Cyclonic Storm
17.05.20/0530	12.3/86.0	80-90 gusting to 100	Cyclonic Storm
17.05.20/1130	12.8/86.0	100-110 gusting to 120	Severe Cyclonic Storm
17.05.20/2330	13.9/86.1	105-115 gusting to 125	Severe Cyclonic Storm
18.05.20/1130	14.9/86.1	120-130 gusting to 145	Very Severe Cyclonic Storm
18.05.20/2330	16.0/86.2	135-145 gusting to 160	Very Severe Cyclonic Storm
19.05.20/1130	17.4/86.5	155-165 gusting to 180	Very Severe Cyclonic Storm
19.05.20/2330	19.0/87.0	170-180 gusting to 200	Extremely Severe Cyclonic Storm
20.05.20/1130	20.8/87.5	160-170 gusting to 190	Extremely Severe Cyclonic Storm
20.05.20/2330	22.9/88.2	145-155 gusting to 170	Very Severe Cyclonic Storm
21.05.20/1130	25.0/88.7	110-120 gusting to 135	Severe Cyclonic Storm

Spatial rainfall distribution: Isolated: <25%, A few: 26-50%, Many: 51-75%, Most: 76-100%

Rainfall amount (mm): Heavy rain: 64.5 – 115.5, Very heavy rain: 115.6 – 204.4, Extremely heavy rain: 204.5 or more.

Warnings:

(i) Rainfall (over Andaman & Nicobar Islands):

- Light to moderate rainfall at most places with heavy falls at isolated places is very likely over Andaman & Nicobar Islands on 16th May.

• Rainfall (over Odisha & Gangetic West Bengal)

Coastal Odisha is likely to experience light to moderate rainfall at many places with heavy falls at isolated places from 18th May evening, heavy to very heavy rainfalls at a few places on 19th May and isolated heavy rainfall over northeast Odisha on 20th May 2020. Coastal districts of Gangetic West Bengal are likely to experience light to moderate rainfall at many places with heavy falls at a few places on 19th May, heavy to very heavy falls at a few places with extremely heavy falls at isolated places over Gangetic West Bengal on 20th May.

(ii) Wind warning

- Squally wind speed reaching 45 to 55 kmph gusting to 65 kmph is likely to commence along and off south Odisha coast from 18th evening, extent over to north Odisha coast from 19th morning and along and off West Bengal coast from 19th afternoon. The wind speed will gradually increase becoming gale wind speed reaching 75 to 85 kmph gusting to 95 kmph from 20th morning along and off north Odisha and West Bengal coast. It will gradually increase thereafter.
- Squally wind speed reaching 45 to 55 kmph gusting to 65 kmph is likely over Andaman Sea during next 48 hours.
- Squally wind speed reaching 50 to 60 kmph gusting to 70 kmph is prevailing over southeast and adjoining southwest Bay of Bengal. It is likely to increase becoming 90-100 gusting to 110 kmph over eastcentral and adjoining west central Bay of Bengal by 17th morning, 120-130 gusting to 145 kmph over southern parts of central Bay of Bengal by 18th morning, 155-165 gusting to 180 kmph over northern parts of central Bay of Bengal and adjoining north Bay of Bengal on 19th, and 160-170 gusting to 190 kmph over north Bay of Bengal by 20th morning.

(iii) Sea condition

Sea condition will be rough to very rough over south & adjoining central Bay of Bengal and Andaman Sea till 16th May evening. It will be High over southwest and adjoining central Bay of Bengal from the 16th May night, very high over the same region from 17th morning. It will become phenomenal over southern parts of central Bay of Bengal on 18th, over northern parts of central Bay of Bengal and adjoining north Bay of Bengal on 19th May and over north Bay of Bengal on 20th May 2020.

(iv) Fishermen Warning

- The fishermen are advised not to venture into south Bay of Bengal from 16th to 17th May, to central Bay of Bengal 17th to 18th May and north Bay of Bengal during 19 to 20th May 2020.
- Also, fishermen are advised not to venture into north Bay of Bengal along and off North Odisha, West Bengal and adjoining Bangladesh coast during 18th to 20th May 2020.

Kindly visit www.rsmcnewdelhi.imd.gov.in and www.mausam.imd.gov.in for updates on the system.

Next Bulletin will be issued at 2030 hours IST of 16th May, 2020.

(Sunitha Devi)
Scientist-E, RSMC, New Delhi

Copy to: CRS, Pune/ ACWC Chennai/ ACWC Kolkata/CWC Bhubaneswar/ /CWC Visakhapatnam

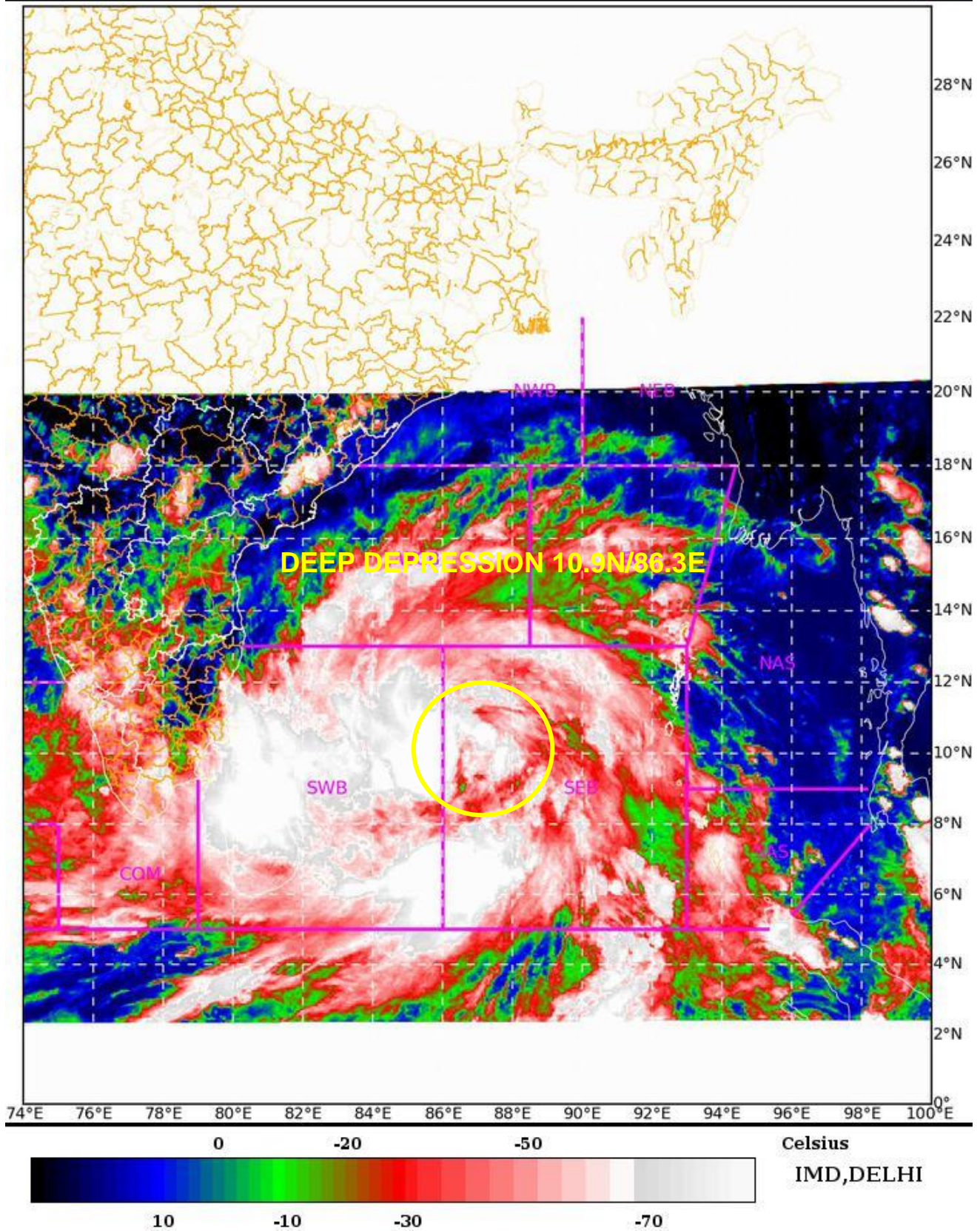
Spatial rainfall distribution: Isolated: <25%, A few: 26-50%, Many: 51-75%, Most: 76-100%
Rainfall amount (mm): Heavy rain: 64.5 – 115.5, Very heavy rain: 115.6 – 204.4, Extremely heavy rain: 204.5 or more.

SAT : INSAT-3DR IMG 16-05-2020/(0949 to 0953) GMT

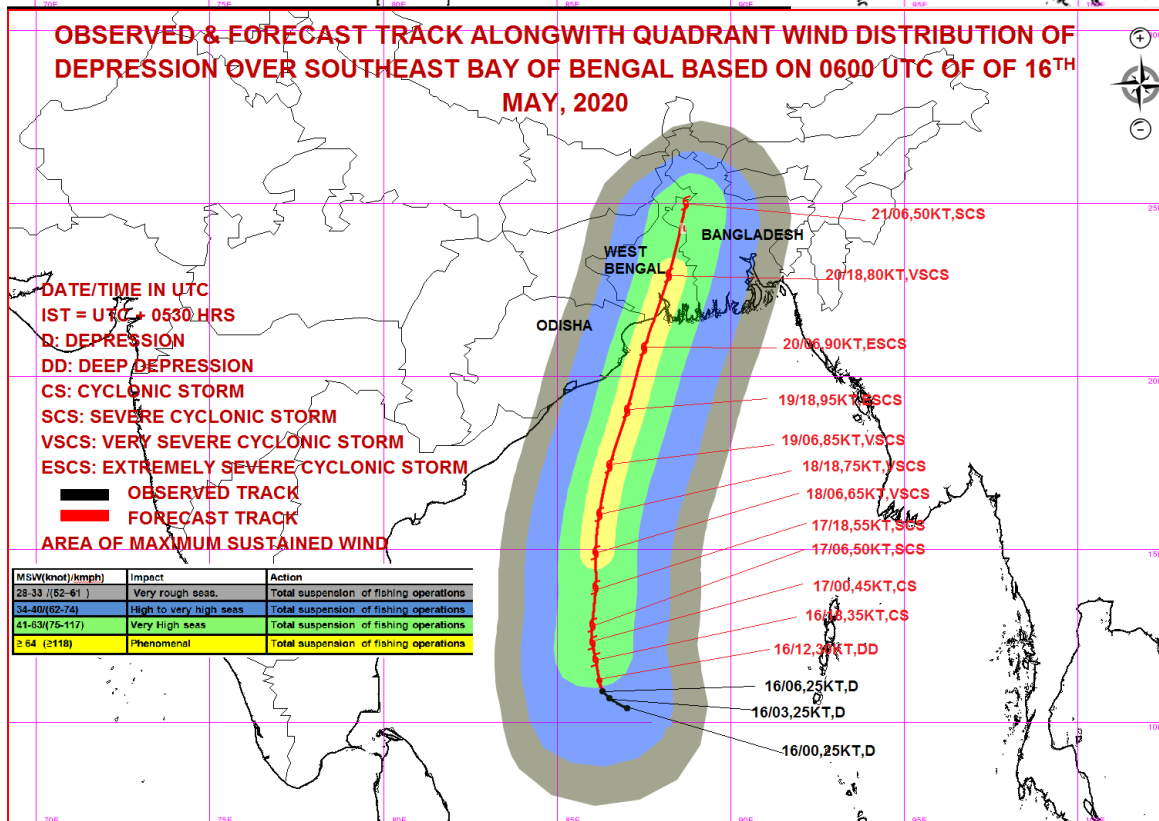
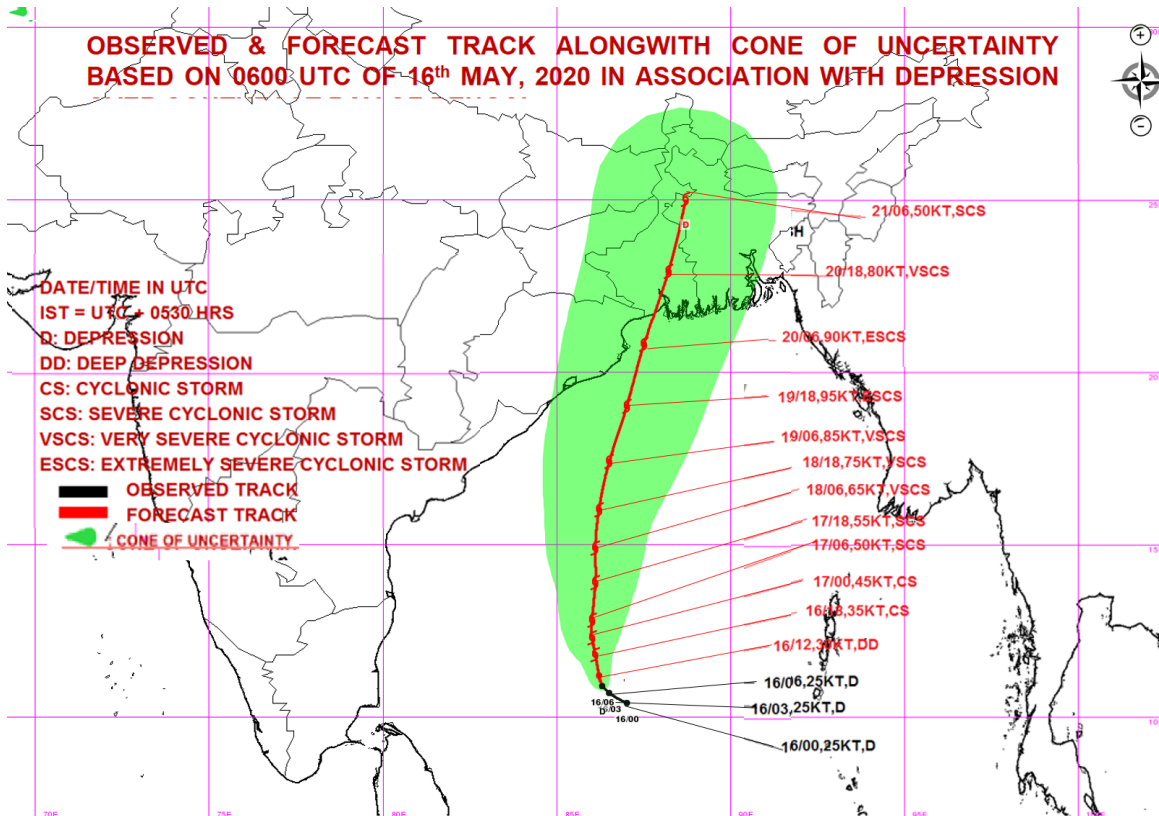
IMG_TIR1_TEMP 10.8 um 16-05-2020/(1519 to 1523) IST



L1C Mercator



Spatial rainfall distribution: Isolated: <25%, A few: 26-50%, Many: 51-75%, Most: 76-100%
Rainfall amount (mm): Heavy rain: 64.5 – 115.5, Very heavy rain: 115.6 – 204.4, Extremely heavy rain: 204.5 or more.



Spatial rainfall distribution: Isolated: <25%, A few: 26-50%, Many: 51-75%, Most: 76-100%
Rainfall amount (mm): Heavy rain: 64.5 – 115.5, Very heavy rain: 115.6 – 204.4, Extremely heavy rain: 204.5 or more.